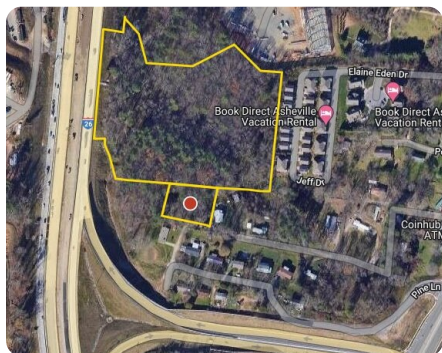


**SOLD**



## 9.59+/- acres off Brevard Road at I-26 (Pine Lane)

9.59 +/- Acres | Buncombe County, NC



### ADDRESS

99999 Pine Lane  
Asheville, NC 28806

### LOCATION

Brevard Road east of I-26 interchange to immediate turn on Pine Road. Pine Road dead-ends into property.

### PROPERTY SUMMARY

Nearly 10 acres in the City of Asheville near Brevard Road/I-26 interchange. Access through residential neighborhood makes this property ideal for residential/multi-family use if re-zoned. Larger parcel zoned CI, smaller parcel that connects to Pine Lane is zoned RS8. Water and sewer available. Excellent candidate for affordable housing tax assistance or senior living. Across interstate exit from Ingles, Asheville Outlet Mall, restaurants, pharmacy.

[nationalland.com/listing/959-acres-off-brevard-road-at-i26-pine-lane](https://nationalland.com/listing/959-acres-off-brevard-road-at-i26-pine-lane)



**National Land Realty**  
1822 S Wendover Road  
Charlotte, NC 28211  
[Nationalland.com](https://Nationalland.com)



**Dac Carver**  
Office: 980-368-3219  
Cell: 980-309-5656  
Fax: 864-331-1610  
[dcarver@nationalland.com](mailto:dcarver@nationalland.com)

The above information is from sources deemed reliable, however the accuracy is not guaranteed.  
National Land Realty assumes no liability for error, omissions or investment results.