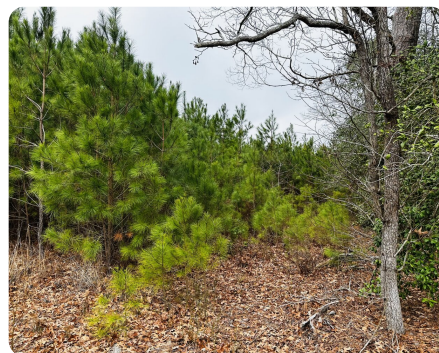


SOLD



Great Timber/Hunting Parcel – 0 Callis Field Lane

40 +/- Acres | Mathews County, VA



ADDRESS

0 Callis Field Lane
Onemo, VA 23130

LOCATION

Co-ordinates: 37.41252N, 76.29745W

All drive times are approx: 3hrs from Washington DC, 1hr 40mins drive from Richmond, a few minutes from Mathews Courthouse.

Co-ordinates: 37.43686 N, 76.32360 W

Google Maps: [From North, South and](#)

PROPERTY SUMMARY

Last harvested in 2012, this +/- 40-acre timber parcel with little topography, makes for a great timber investment property, your private hunting paradise, or build your dream home among the trees.

Access is easy, with approx 1,470 feet of the parcel fronting Callis Field Lane. Power lines run along the road. No perk testing has been done to date.

It is a short drive to Bethel Beach and the amenities in the City of Mathews. Call today to learn more!

nationalland.com/listing/great-timberhunting-parcel-0-callis-field-lane



National Land Realty
2920 West Broad Street
Richmond, VA 23230
NationalLand.com



Claire Dee
Office: 804-808-1447
Cell: 804-999-6166
Fax: 864-331-1610
CDee@NationalLand.com

The above information is from sources deemed reliable, however the accuracy is not guaranteed.
National Land Realty assumes no liability for error, omissions or investment results.