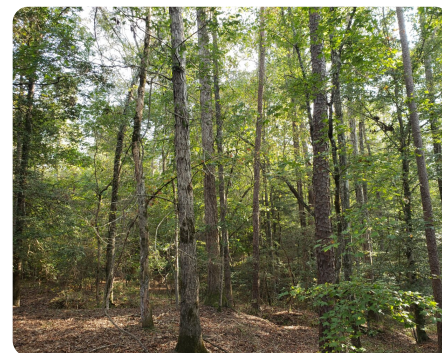
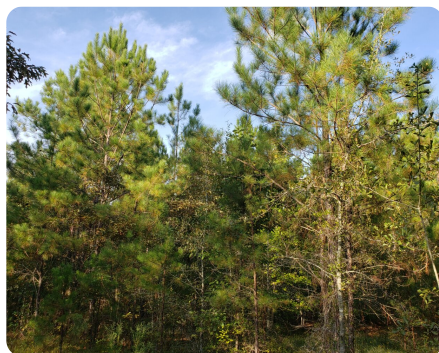
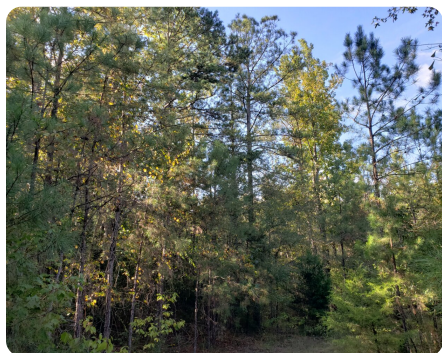


SOLD



Boot Hill Timber Investment

60 +/- Acres | Barbour County, AL



ADDRESS

000 County Road 9
Louisville, AL 36048

LOCATION

From Clayton, AL, take Highway 239 West, and turn left onto County Road 9. Take CR 9 to the intersection of CR 44. Property access is on the right.

PROPERTY SUMMARY

Timber investment tract with excellent deer hunting as a bonus. Deeded access from County Road 9. Mixed natural timber with a nice creek in the middle. Timber is pre-merchantable mostly with some merchantable timber scattered throughout the tract.

nationalland.com/listing/boot-hill-timber-investment



National Land Realty
4267 Lomac Street
Montgomery, AL 36106
Nationalland.com



Dale Hurst
Office: 855-384-5263
Cell: 334-782-1240
Fax: 864-331-1610
Dhurst@nationalland.com

The above information is from sources deemed reliable, however the accuracy is not guaranteed. National Land Realty assumes no liability for error, omissions or investment results.