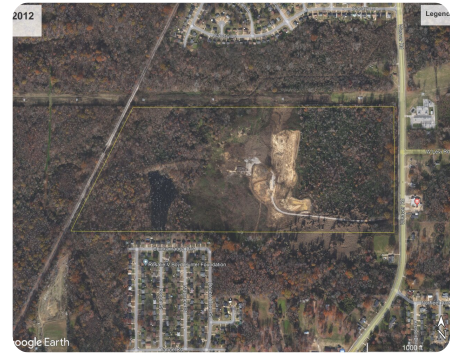
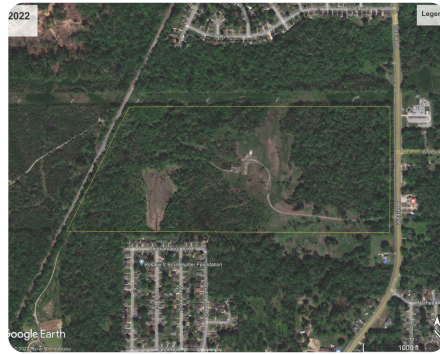


SOLD



South Memphis Development Property

115 +/- Acres | Shelby County, TN



ADDRESS

3967 Weaver Road
Memphis, TN 38109

LOCATION

From downtown Memphis, take Highway 61 to West Raines Street. In two miles, take a right on Weaver Road. Property will be on the left across from the fire station.

PROPERTY SUMMARY

115 +/- acres zoned Heavy Industrial in south Memphis. With a rail spur in the west boundary, the property was used as a shipping/receiving terminal in the past. There has been some dirt sold from the property. The property is located road miles to Memphis International Airport, 2 miles to Highway 61, and 4 miles to Highway 240/55. A Memphis Fire Station is directly across from the gated entrance. A substation is across the street and a 171 MW transmission line borders the north boundary. Opportunities exist for residential, commercial, industrial development, solar farm, landfill, recycling center, mulch operation, UTV park, wildlife reserve, dirt sales, trailer storage, and warehouse. There's great potential for different uses for this large property near the city of Memphis, Mississippi River, intermodal, airport, and interstate highway.

nationalland.com/listing/south-memphis-development-property



National Land Realty
2298 Young Avenue
Memphis, TN 38104
NationalLand.com



Louis Holbrook
Office: 901-676-8556
Cell: 901-355-2988
Fax: 864-331-1610
Lholbrook@NationalLand.com

The above information is from sources deemed reliable, however the accuracy is not guaranteed.
National Land Realty assumes no liability for error, omissions or investment results.