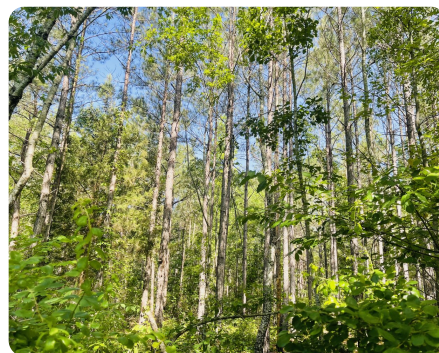
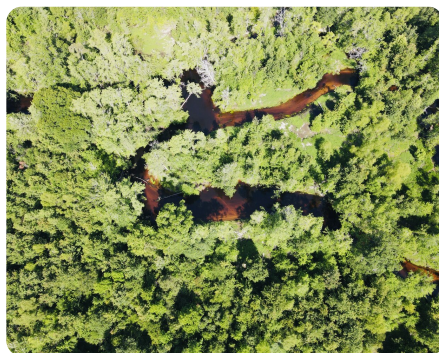


SOLD



Lumber River 12 ac

12.07 +/- Acres | Robeson County, NC



ADDRESS

Clark Rd
Maxton, NC 28364

LOCATION

Clark Rd

PROPERTY SUMMARY

With frontage on the Lumber River and paved road frontage, the Lumber River Tract offers a unique opportunity to own 12+/- acres of stunning river land. The majority of the property is mature pines with a hardwood mix closer to the river. Huge cypress trees line the river providing picturesque views. County Water is available! This property is ideal for hunting, fishing, and recreation! Minutes off HWY 74 and a few miles from I-95 give it a convenient location that is easy to get to. Additional acreage is available. This is a great property for having your private homestead! Call Cailein for your private tour!

nationalland.com/listing/lumber-river-12-ac



National Land Realty
2220 Peanut Plant Road
Elizabethtown, NC 28337
NationalLand.com



Cailein Campbell
Office: 828-622-4794
Cell: 828-460-4049
Fax: 864-331-1610
Ccampbell@nationalland.com

The above information is from sources deemed reliable, however the accuracy is not guaranteed.
National Land Realty assumes no liability for error, omissions or investment results.