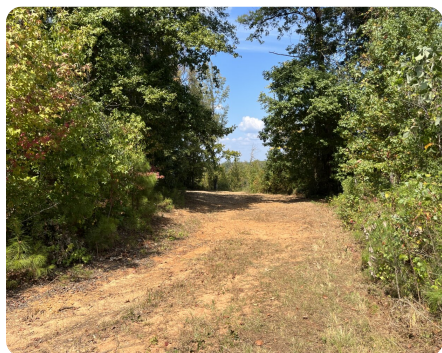


**SOLD**



## Fayette Hunting and Recreation Property

190 +/- Acres | Fayette County, AL



### ADDRESS

0 County Road 35  
Fayette, AL 35555

### LOCATION

Call for directions.

### PROPERTY SUMMARY

With two existing food plots, a small, year-round stream, thick bedding cover with plenty of browse and forage, this property has all the makings of a top-notch recreation and hunting property for someone willing to put a few finishing touches on it. Plenty of frontage on County Road 35 with utilities available along the road offer multiple potential locations for a home or hunting camp. The majority of the timber was harvested in 2016 and left to naturally regenerate. A long SMZ borders the stream through the middle of the tract providing an internal travel corridor for wildlife as well as roost trees for turkeys. Call today to schedule a tour!

[nationalland.com/listing/fayette-hunting-and-recreation-property](https://nationalland.com/listing/fayette-hunting-and-recreation-property)



National Land Realty  
2633 Valleydale Rd.  
Suite 150  
Birmingham, AL 35244  
[Nationalland.com](https://Nationalland.com)



**John Ross Havard**  
Office: 205-606-5493  
Cell: 205-300-5007  
Fax: 864-331-1610  
[Jrhavard@nationalland.com](mailto:Jrhavard@nationalland.com)

The above information is from sources deemed reliable, however the accuracy is not guaranteed.  
National Land Realty assumes no liability for error, omissions or investment results.