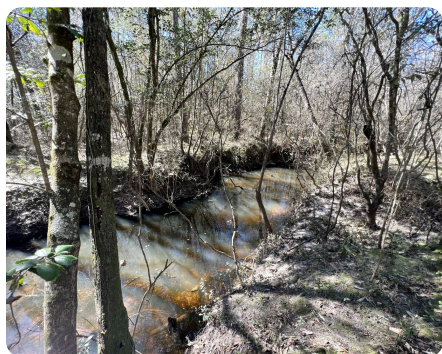


**SOLD**



# Hawthorn Bilbo Creek Hunting & Timber Investment Tract

100 +/- Acres | Washington County, AL



## ADDRESS

0 Hawthorn Road  
Wagarville, AL 36553

## LOCATION

Call agent for directions.

## PROPERTY SUMMARY

This secluded hunting & timber investment is located in the Hawthorn community of Washington County. Situated over a mile off Hawthorn Road and behind a locked gate, this parcel is very remote. Bilbo Creek flows through the property, providing a year-round water source for wildlife and allowing for a potential lake site. The internal road system gives access to the majority of the tract. Several food plot locations, including a powerline easement, offer great hunting opportunities for the abundant deer, turkey, & small game. Shown by appointment only.

[nationalland.com/listing/hawthorn-bilbo-creek-hunting-timber-investment-tract-1](http://nationalland.com/listing/hawthorn-bilbo-creek-hunting-timber-investment-tract-1)



National Land Realty  
9 N. Conception St.  
Mobile, AL 36602  
[NationalLand.com](http://NationalLand.com)



**Tom Leatherbury, Jr.**  
Office: 251-732-6159  
Cell: 251-422-5643  
Fax: 888-672-1810  
[Tleatherbury@nationallandrealty.com](mailto:Tleatherbury@nationallandrealty.com)

The above information is from sources deemed reliable, however the accuracy is not guaranteed.  
National Land Realty assumes no liability for error, omissions or investment results.