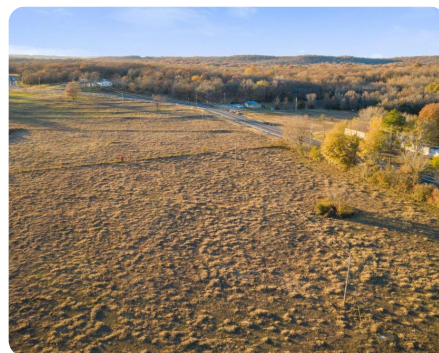
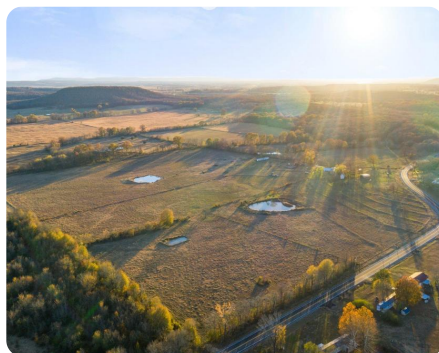


SOLD



Kerr Lake Pasture/Homesite

29.93 +/- Acres | Haskell County, OK



ADDRESS

0 E CR 1175
Keota, OK 74941

LOCATION

From Cowlington, head north on Kerr Lake Rd for 0.75 miles, turn west on Cowlington Point Rd (E County Rd 1175) for 2.1 miles, property sits on south side of road.

PROPERTY SUMMARY

Versatile property just south of Kerr Lake across from Cowlington Point Campground, this affordable acreage consists of roughly 20 pasture acres with one pond and 10 acres of hay meadow. Bring in a mobile home, build, or park your camper as you enjoy the lake activities. To go along with the paved road frontage, an electric pole, rural water tap, and septic tank are already established on the property making it convenient to start a homestead. With approximately 1,000 feet of shared boundary with Corp of Engineer land, this smaller tract also provides good hunting opportunities that are hard to find for a property this size.

nationalland.com/listing/kerr-lake-pasturehomesite



National Land Realty
5815 W US Hwy 270
McAlester, OK 74501
NationalLand.com



Keaton Page
Office: 580-954-3433
Cell: 620-778-5181
Fax: 864-331-1610
kpage@nationalland.com

The above information is from sources deemed reliable, however the accuracy is not guaranteed.
National Land Realty assumes no liability for error, omissions or investment results.