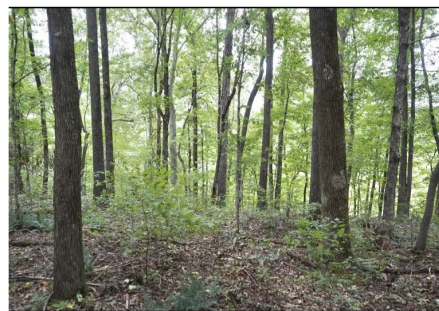
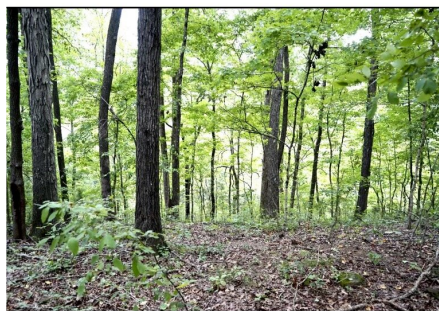
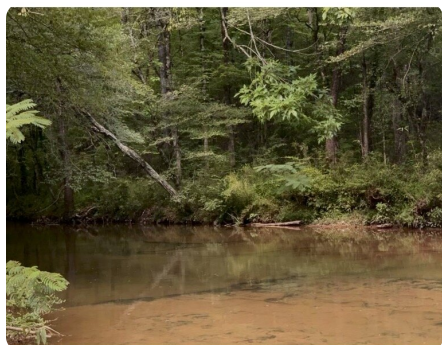


**SOLD**



## Beautiful Property on Anderson Creek

3 +/- Acres | Lauderdale County, AL



### ADDRESS

County Road 536  
Rogersville, AL 35652

### LOCATION

Located on County Road 536  
Rogersville, AL 35652

### PROPERTY SUMMARY

This +/- 3-acre property in Rogersville, Alabama, presents a unique opportunity to own a slice of natural paradise. With its creek frontage, hardwoods, recreational possibilities, and abundant wildlife, it's an ideal spot for those seeking a peaceful and adventurous lifestyle in a picturesque setting. Ideal for building your dream home with water and electricity already at the road ready for you! Whether you're interested in fishing, hunting, or simply enjoying the beauty of nature, this property has it all.

[nationalland.com/listing/beautiful-property-on-anderson-creek](https://nationalland.com/listing/beautiful-property-on-anderson-creek)



**National Land Realty**  
2101 Clinton Avenue West  
Suite 301B  
Huntsville, AL 35805  
[NationalLand.com](https://NationalLand.com)

**Jonathan Berryhill**  
Office: 256-408-5130  
Cell: 256-874-7354  
Fax: 864-331-1610  
[Jberryhill@NationalLand.com](mailto:Jberryhill@NationalLand.com)

**Kelton Craig**  
Office: 938-465-5287  
Cell: 256-275-5014  
Fax: 864-331-1610  
[Kcraig@nationalland.com](mailto:Kcraig@nationalland.com)

The above information is from sources deemed reliable, however the accuracy is not guaranteed.  
National Land Realty assumes no liability for error, omissions or investment results.