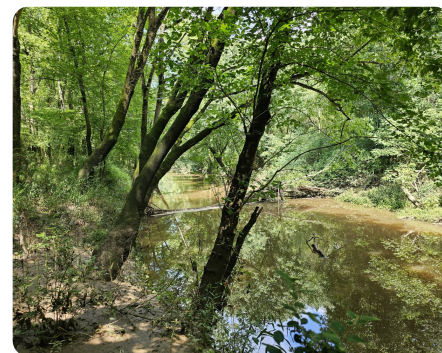
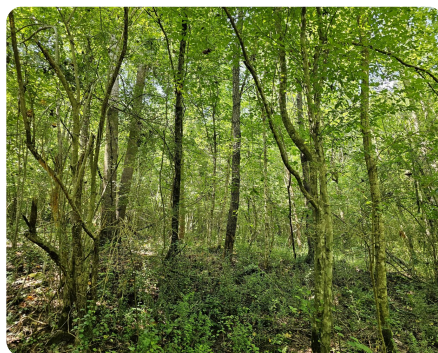


SOLD



Moulton White Oak Timber

22.2 +/- Acres | Lawrence County, AL



ADDRESS

000 Alabama Highway 157
Moulton, AL 35650

LOCATION

From the intersection of AL Hwy 24 and AL Hwy 157 drive north on AL Hwy 157 for 6.3 miles. The property is on a service road on the north side of AL Hwy 157.

PROPERTY SUMMARY

This affordable property near Moulton, AL has high-quality timber, and beautiful old-growth hardwood stands, and is situated by Muddy Creek. The younger natural hardwood in the south provides quality cover for deer and the bountiful mature white oak on the northern 2/3 of the property provides acorns for winter feeding. The recreational opportunities include hunting, ATV riding, camping, and hiking. The proximity to Moulton, AL, and the Shoals plus the easy access to AL Hwy 157 makes this an ideal location for a cabin site or perhaps even a home site.

nationalland.com/listing/moulton-white-oak-timber



National Land Realty
309 Franklin Street
Huntsville, AL 35801
NationalLand.com



Billy Rye
Office: 256-459-0745
Cell: 256-810-6876
Fax: 864-331-1610
Brye@nationalland.com

The above information is from sources deemed reliable, however the accuracy is not guaranteed. National Land Realty assumes no liability for error, omissions or investment results.