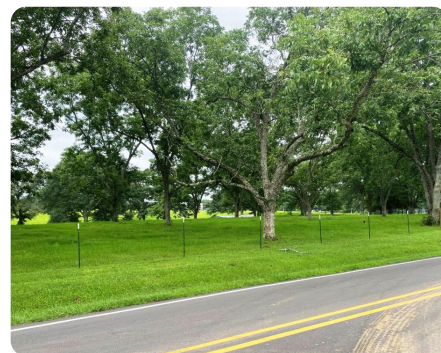


SOLD



Purvis Mini-Farm with Living Quarters

15 +/- Acres | Lamar County, MS



ADDRESS

1027 Purvis Columbia Road
Purvis, MS 39475

LOCATION

From Hwy 589/Hwy 11 intersection in Purvis - go south on Hwy 11 for 0.3 mi. to Shelby Speights Dr. on right, then go 0.4 mi. and cross R/R track, then turn right on Main St., then go 0.1 mi. to Mulberry Street (Purvis Columbia Rd.), and go 0.9 mi. to property on left.

PROPERTY SUMMARY

This horse farm with barns and living quarters has tremendous residential development potential or just a single-family home that desires a pastoral setting in the country. Rolling cross-fenced pasture with scattered groves of oak trees has a 1,380 sf. barndominium with 500 sf. of living quarters perched on the highest hill. The living quarters are nicely done with 10 ft ceilings, granite countertops, containing kitchen, living room, 1 bedroom with bath. A 1,850 sf. horse barn with stalls and A/C tack room for the horses. Road frontage on Purvis-Columbia Road and Howard Street provides numerous home sites if desired. Purvis School district. Please call for an appointment

nationalland.com/listing/purvis-minifarm-with-living-quarters



National Land Realty
11 Willow Bend Drive
Hattiesburg, MS 39402
NationalLand.com



Mark Anderson
Office: 601-891-5494
Cell: 601-596-2207
manderson@nationalland.com

The above information is from sources deemed reliable, however the accuracy is not guaranteed.
National Land Realty assumes no liability for error, omissions or investment results.