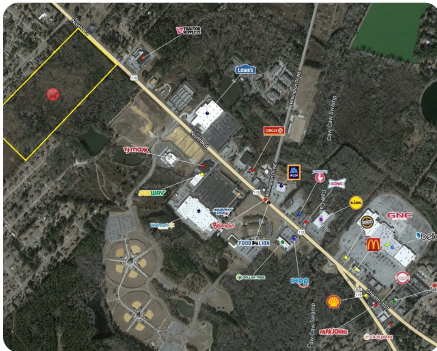


UNDER CONTRACT



North Road, Orangeburg Development Site

44.91 +/- Acres (\$43,420/acre) | Orangeburg County, SC | \$1,950,000



ADDRESS

North Road
Orangeburg, SC 29118

LOCATION

Across from Tractor Supply and
Pawn It Fast on North Road

PROPERTY SUMMARY

These 44.9 +/- acres on North Road are in one of the most highly sought-after development sites in Orangeburg! Approximately 890 feet of frontage on North Road; within half a mile of Walmart Supercenter, Lowe's, Tractor Supply, Petco, Orangeburg Prep, Orangeburg Recreational Park, Public Storage, and several other national chains. Also nearby are several single-family and multi-family developments. This site could support a variety of development opportunities. Sewer is approximately 300 feet from the site. Currently zoned Agricultural. Traffic counts are approx. 25,000 cars per day. APN 0151-05-05-002.000. Don't miss out on this incredible opportunity to invest in one of South Carolina's fastest-growing markets.

nationalland.com/listing/north-road-development-site



National Land Realty
7001 Pelham Road
Suite M
Greenville, SC 29615
Nationalland.com



Edward Weathers
Office: 855-384-5263
Cell: 803-928-6188
Fax: 864-331-1610
Eweathers@nationalland.com

The above information is from sources deemed reliable, however the accuracy is not guaranteed.
National Land Realty assumes no liability for error, omissions or investment results.