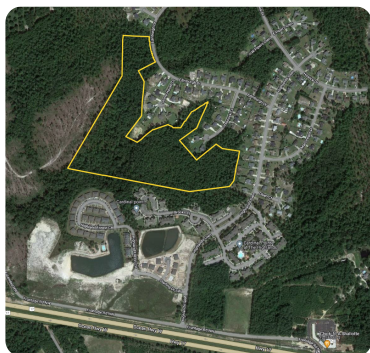


SOLD



## Highlands Glen

25.72 +/- Acres | Brunswick County, NC



### ADDRESS

0 Edinburgh Drive  
Shallotte, NC 28470

### LOCATION

0 Edinburgh Dr

### PROPERTY SUMMARY

Ever wanted to live at the beach AND have a mini-farm homestead? Highlands Glen offers over 25 acres ideal for a private estate. With the value of the current stand of timber, you could clear land for a house, pasture, or pond and have the ultimate homestead just 15 minutes from Holden Beach and Ocean Isle Beach. Less than 10 minutes to Tractor Supply and just off Hwy 17 makes it an easy drive to Wilmington and Myrtle Beach. Properties of this size in this location don't often come to market. Call Marshall for more information!

[nationalland.com/listing/highlands-glen](http://nationalland.com/listing/highlands-glen)



National Land Realty  
2220 Peanut Plant Road  
Elizabethtown, NC 28337  
[NationalLand.com](http://NationalLand.com)



Marshall Tatum  
Office: 910-901-8839  
Cell: 910-991-5691  
Fax: 910-991-6517  
[Mtatum@nationalland.com](mailto:Mtatum@nationalland.com)

The above information is from sources deemed reliable, however the accuracy is not guaranteed.  
National Land Realty assumes no liability for error, omissions or investment results.