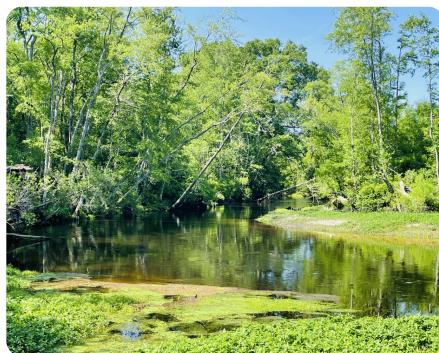
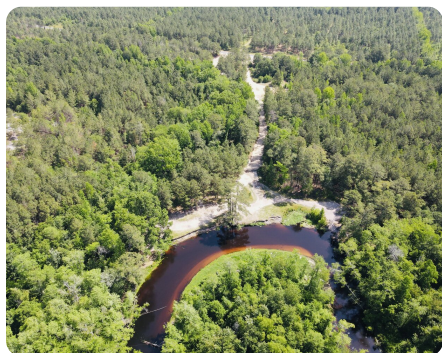


SOLD



Lumber River Honey Hole

35 +/- Acres | Robeson County, NC



ADDRESS

Clark Rd
Maxton, NC 28364

LOCATION

Clark Rd

PROPERTY SUMMARY

With frontage on the Lumber River and paved road frontage, the Lumber River Honey Hole offers a unique opportunity to own 35+/- acres of stunning river land. The majority of the property is mature pines with a hardwood mix closer to the river. Huge cypress trees line the river providing picturesque views. The river access point and boat ramp is able to accommodate canoes, kayaks, and small boats. Includes a private beach with plenty of cleared area for a cabin or house! County Water available! This property is ideal for hunting, fishing, and to enjoy recreationally! Minutes off HWY 74 and a few miles from I-95 give it a convenient location that is easy to get to. Additional acreage is available. Call Cailein for your private tour!

nationalland.com/listing/lumber-river-honey-hole



National Land Realty
2220 Peanut Plant Road
Elizabethtown, NC 28337
NationalLand.com



Cailein Campbell
Office: 828-622-4794
Cell: 828-460-4049
Fax: 864-331-1610
Ccampbell@nationalland.com

The above information is from sources deemed reliable, however the accuracy is not guaranteed.
National Land Realty assumes no liability for error, omissions or investment results.