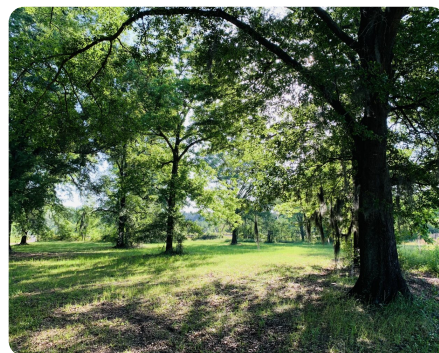


**SOLD**



## Dead River Plantation

268.58 +/- Acres | Aiken County, SC



### ADDRESS

0 Tennis Ranch Road  
Jackson, SC 29831

### LOCATION

From Augusta, GA Town Hall, Start on Greene Street. Turn left onto E Boundary Street. After 350 ft, turn right onto Sand Bar Ferry Road. After 2.9 miles, stay straight on Sand Bar Ferry Road, then after another 1.5 miles, take a slight right onto Old Jackson Highway. After 1.4 miles, t

### PROPERTY SUMMARY

Discover the epitome of Southern charm on this 268.58 +/- acre property in Aiken County, South Carolina, nestled near the picturesque Savannah River and North Augusta. This expansive estate offers a blend of natural beauty and recreational opportunities. Boasting a diverse landscape, including mixed tillable agricultural fields, bottomland hardwoods, and a duck impoundment, this property is a haven for outdoor enthusiasts. Intense habitat and wildlife management have resulted in an abundance of wildlife, with ample opportunities for deer and turkey hunting, as well as ducks, hogs, and alligators on the Dead River. Immerse yourself in the tranquility of nature as you explore the rolling fields and wooded areas, enjoying the thrill of the chase. Privacy is paramount on this remarkable property, providing a serene retreat from the outside world. Embrace the sense of seclusion as you escape the hustle and bustle of everyday life, allowing the stresses to melt away. The pole barn ensures conven

[nationalland.com/listing/dead-river-plantation](https://nationalland.com/listing/dead-river-plantation)



**National Land Realty**  
1721 Saunders Street  
Columbia, SC 29201  
[NationalLand.com](https://NationalLand.com)

**Nicholas Ardis**  
Office: 803-674-5779  
Cell: 803-236-8411  
Fax: 864-331-1610  
[Nardis@nationalland.com](mailto:Nardis@nationalland.com)

**Brent Lattimore**  
Office: 803-805-4935  
Cell: 803-528-5110  
Fax: 864-331-1610  
[Blattimore@NationalLand.com](mailto:Blattimore@NationalLand.com)

The above information is from sources deemed reliable, however the accuracy is not guaranteed.  
National Land Realty assumes no liability for error, omissions or investment results.