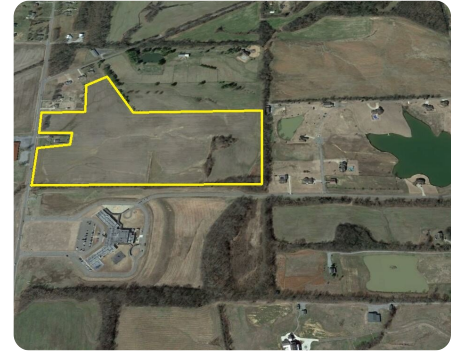




## Dyersburg Development 50 acres

50.54 +/- Acres | Dyer County, TN | \$1,300,000



### ADDRESS

2328 Millsfield Hwy  
Dyersburg, TN 38024

### LOCATION

The property is on Millsfield Highway  
1.5 miles north of the Hwy 155  
overpass.

### PROPERTY SUMMARY

Developer's opportunity in growing Dyer County! The property borders the Fifth Consolidated Elementary School, a newly developed upscale neighborhood, and agriculture fields. The land slopes up from the road for a picturesque location for a subdivision. A residential development project is underway on the other side of the elementary school. Blue Oval City is 55 miles away. Memphis International Airport 90 miles. Located near Reelfoot Lake, Tigrett, Bogota, White Lake, Gooch, and other private and public duck-hunting properties. City limits end at the south border of the property and the property can be annexed. Electricity is in place along the road. Here is the opportunity to capitalize on growing West Tennessee!

[nationalland.com/listing/dyersburg-development-50-acres](https://nationalland.com/listing/dyersburg-development-50-acres)



National Land Realty  
2298 Young Avenue  
Memphis, TN 38104  
[NationalLand.com](https://NationalLand.com)



**Louis Holbrook**  
Office: 901-676-8556  
Cell: 901-355-2988  
Fax: 864-331-1610  
[Lholbrook@NationalLand.com](mailto:Lholbrook@NationalLand.com)

The above information is from sources deemed reliable, however the accuracy is not guaranteed.  
National Land Realty assumes no liability for error, omissions or investment results.