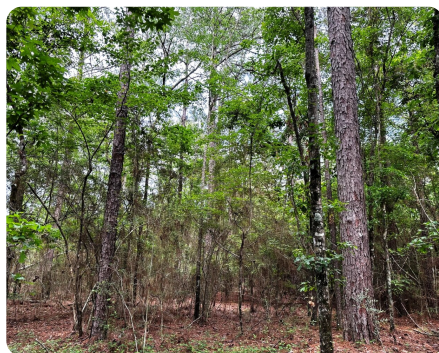


SOLD



Dixie Timber and Hunting Property

103.12 +/- Acres | Forrest County, MS



ADDRESS

00 Ollie Williams Road
Hattiesburg, MS 39401

LOCATION

From South Hattiesburg (intersection of Hwy 49/Hwy 98) go south on Hwy 49 for 4.1 miles to South Gate - Camp Shelby then turn left on Anderson Road for 0.1 mile and continue on Ollie Williams Road, then go 1.1 miles to Property on left.

PROPERTY SUMMARY

The multi-purpose property has timber, hunting, and residential development potential in one package. Conveniently located, it is 5.5 miles to the major Hwy 49/Hwy 98 intersection, 11 miles from downtown Hattiesburg and 55 miles from Gulfport, MS. Three ages of timber generate current and future income with good deer and turkey populations for hunting. There is over 1/4 mile of paved road frontage with utilities available for the development potential of a weekend getaway. Good schools nearby. Please call Mark Anderson for more information at 855-NLR-LAND.

nationalland.com/listing/dixie-timber-and-hunting-property



National Land Realty
11 Willow Bend Drive
Hattiesburg, MS 39402
NationalLand.com



Mark Anderson
Office: 601-891-5494
Cell: 601-596-2207
manderson@nationalland.com

The above information is from sources deemed reliable, however the accuracy is not guaranteed.
National Land Realty assumes no liability for error, omissions or investment results.