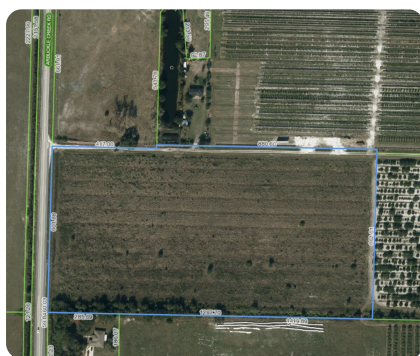


SOLD



Agricultural Investment Opportunity: Invest in Florida Farmland

20 +/- Acres | Highlands County, FL



ADDRESS

820 ARBUCKLE CREEK RD
Lorida, FL 33857

LOCATION

US-27 S Sebring, FL 33870

Take Mall Ring Rd to US-98 S/US Hwy
27 S

2 min (0.3 mi)

Follow US-98 S to Arbuckle Creek Rd

21 min (17.0 mi)

PROPERTY SUMMARY

Discover the potential of this exceptional farmland located in the heart of Lorida, FL. Encompassing 20.01 acres of prime tillable land, this property offers a unique opportunity for farmers, investors, or developers seeking a profitable and sustainable investment. Boasting rich soil and level topography, this valuable acreage is perfect for growing crops, raising livestock, or creating a thriving business venture. Nestled in a tranquil and picturesque setting, this property is located just minutes away from the beautiful Arbuckle Creek, providing a year-round source of water for irrigation and recreation. The area is renowned for its natural beauty, with miles of hiking and biking trails, fishing spots, and wildlife sanctuaries to explore. Whether you're looking to expand your farming operations, build your dream home, or capitalize on the rising demand for high-quality farmland, this property is a rare find that should not be missed.

nationalland.com/listing/agricultural-investment-opportunity-invest-in-florida-farmland



National Land Realty
2180 West First St
Unit 301
Fort Myers, FL 33901
NationalLand.com

Sean Doyle
Office: 352-558-6212
Cell: 407-988-6586
Fax: 864-331-1610
Sdoyle@nationalland.com

Justus Koester
Office: 239-893-9126
Cell: 239-898-0163
Fax: 239-541-8375
Jkoester@nationalland.com

The above information is from sources deemed reliable, however the accuracy is not guaranteed.
National Land Realty assumes no liability for error, omissions or investment results.