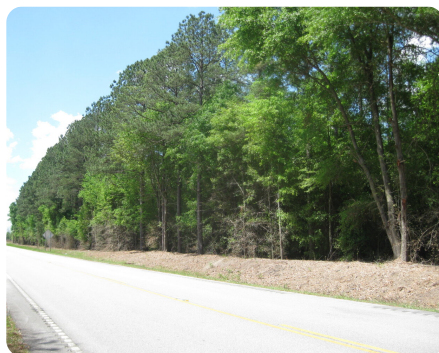


SOLD



Salley Executive Homesite Investment

31.31 +/- Acres | Orangeburg County, SC



ADDRESS

0 John Nunn Highway
Salley, SC 29137

LOCATION

From Salley take Hwy 394 east approximately 5 miles, just before the intersection with Hwy 389 the tract is on both sides of the road.

From Wagener take Hwy 389 east approximately 12 miles, just before the intersection with Hwy 394 the tract is on the right.

PROPERTY SUMMARY

Tucked against the Aiken County line in the quiet of the Sawyerdale Community area this 31 +/- acres is a great setting for your rural home away from the pace of town life. The tract is fully wooded with mature natural pines and understory oaks. The property has frontage on Hwys 389 and 394, level topography, electricity is at the property, well and septic needed. Small communities of Swansea, Wagener, Salley, and North are 10-25 minutes away, approximately 45 minutes to Aiken, and 40 minutes to Lexington. Opportunity to put up a couple of stands and try for a deer while home plans are coming together. Ask agent about subdividing possibilities.

nationalland.com/listing/salley-executive-homesite-investment



National Land Realty
1721 Saunders Street
Columbia, SC 29201
NationalLand.com



Jim Taylor
Office: 803-674-5345
Cell: 803-960-2956
Fax: 864-331-1610
Jtaylor@nationalland.com

The above information is from sources deemed reliable, however the accuracy is not guaranteed.
National Land Realty assumes no liability for error, omissions or investment results.