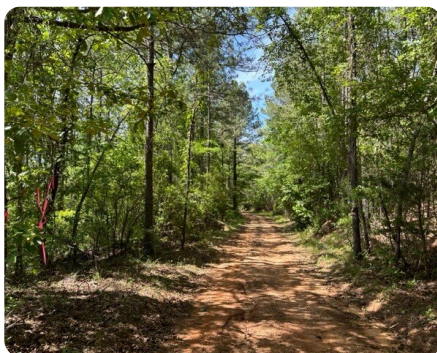


**SOLD**



## The Buck Creek Property

599 +/- Acres | Chilton County, AL



### ADDRESS

0 County Road 101  
Plantersville, AL 36758

### LOCATION

Contact us for property location details.

### PROPERTY SUMMARY

The Buck Creek Property is made up of 3 tracts of land totaling 621 acres in Chilton County, Alabama. This property has been intensively managed for pine timber production for 30 years. It now primarily consists of merchantable planted pine stands, all of which have been thinned in the last 10 years. The property is located in a robust pine timber market area with solid demand for both pine pulpwood and pine sawtimber in the region.

This property can also be considered an above-average recreational property. In addition to the typical upland pine plantation habitat, there are significant areas of stream bottom hardwoods along with waterfowl habitat in flooded portions of the bottoms.

The Buck Creek Property is a great timberland investment property with excellent potential for future growth of timber-generated revenues, as well as recreational enjoyment.

[nationalland.com/listing/the-buck-creek-property](https://nationalland.com/listing/the-buck-creek-property)



**National Land Realty**  
2809 8th Street  
Tuscaloosa, AL 35401  
[Nationalland.com](https://Nationalland.com)



**Bruce Lanier**  
Office: 659-240-6301  
Cell: 205-292-4465  
Fax: 205-343-2144  
[Blanier@nationalland.com](mailto:Blanier@nationalland.com)

The above information is from sources deemed reliable, however the accuracy is not guaranteed.  
National Land Realty assumes no liability for error, omissions or investment results.