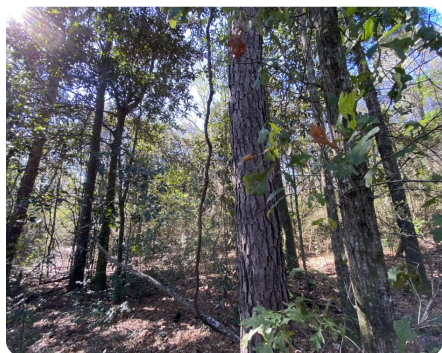


SOLD



The Semmes Moffett Road Investment Tract

55.4 +/- Acres | Mobile County, AL



ADDRESS

0 Moffett Road
Semmes, AL 36575

LOCATION

Contact us for property location details.

PROPERTY SUMMARY

This versatile tract near Semmes is prime for investment and future development. It has four access points available, including 229 feet of Moffett Road frontage, a possible connection at Whitestone Place in the popular Whitestone Subdivision, Lynn Drive, and Satsuma Place off Firetower Road. The land is gently sloping with Double Branch Creek running through the northern tip, but there are very little wetlands overall. The site is conveniently located near schools, grocery stores, banks, pharmacies, restaurants, and offices, but the property's location and shape also allows for peace, quiet, and privacy. Electricity, an 8 inch water line, and a 2 inch gas line are available along Moffett Road, making this site perfect for a large homestead, subdivision development or possible large parcel subdivision. Call Clint Flowers, ALC at 855.NLR.LAND for more information.

nationalland.com/listing/the-semmes-moffett-road-investment-tract-1



National Land Realty
9 N. Conception St.
Mobile, AL 36602
NationalLand.com

Tom Leatherbury, Jr.
Office: 251-732-6159
Cell: 251-422-5643
Fax: 888-672-1810
Tleatherbury@nationallandrealty.com

Clint Flowers, ALC
Office: 251-572-7366
Cell: 251-387-0787
cflowers@nationalland.com

The above information is from sources deemed reliable, however the accuracy is not guaranteed.
National Land Realty assumes no liability for error, omissions or investment results.