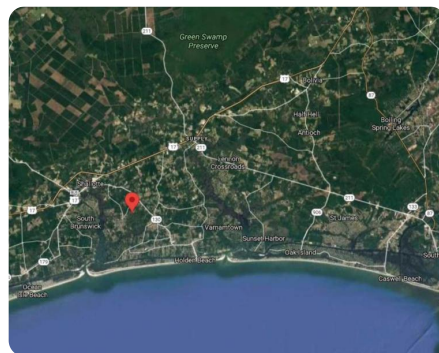
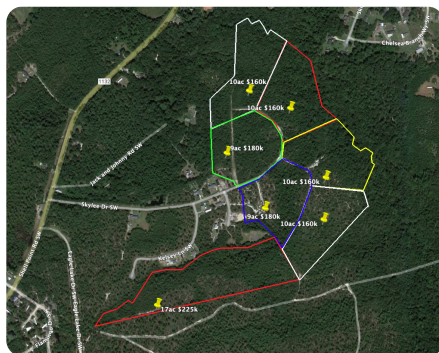


SOLD



Skylee 9ac

9 +/- Acres | Brunswick County, NC



ADDRESS

0 Skylee Dr
Shallotte, NC 28470

LOCATION

Located on Skylee Dr

PROPERTY SUMMARY

Skylee Place is now being offered to sell as private homesteads. Would you rather have acreage to hunt, relax, and live peacefully for the same price as a lot on a golf course? Skylee is it! Located between HWY 17 and Holden Beach, Skylee Place sits just 4 miles from HWY 17 and only 7 miles from the oceanfront. The entrance to the property is Skylee Drive, a paved road with power and water- no well needed! This is a great tract for someone looking to invest in one of the hottest markets in North Carolina, or for someone to build their forever home with plenty of room. This parcel is a portion from the entire tract which consists of 78 acres.

nationalland.com/listing/skylee-9ac



National Land Realty
2220 Peanut Plant Road
Elizabethtown, NC 28337
NationalLand.com



Cailein Campbell
Office: 828-622-4794
Cell: 828-460-4049
Fax: 864-331-1610
Ccampbell@nationalland.com

The above information is from sources deemed reliable, however the accuracy is not guaranteed.
National Land Realty assumes no liability for error, omissions or investment results.