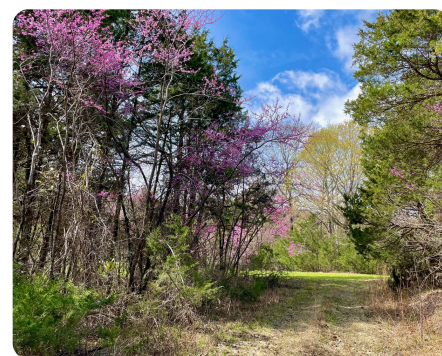


SOLD



Caney Slough Hunting, Fishing, & Recreational Tract on the Tombigbee River

1,040 +/- Acres | Sumter County, AL



ADDRESS

0 LEITCH ROAD
Livingston, AL 35470

LOCATION

Contact listing agent for directions.

PROPERTY SUMMARY

Featuring nearly two miles of Tombigbee riverfront, a 20-acre lake, Caney Slough, and some of the greatest diversity that can be found on any property in Alabama, the Broadhead Tract is a bonefide sportsman's paradise. Recreational activities offered include excellent deer, turkey, and waterfowl hunting, lake, slough, and river fishing, boating, ATV riding, and much more!

The composition consists of:

- Rich, fertile bottomland filled with mature hardwoods
- Over 20 acres of slough that hold waterfowl and Crappie
- Upland, rolling terrain comprised of hardwood-dominant mixed timber
- Twice-thinned pine plantation

nationalland.com/listing/caney-slough-hunting-fishing-recreational-tract-on-the-tombigbee-river



National Land Realty
9 N. Conception St.
Mobile, AL 36602
NationalLand.com

Mitchell Jones
Office: 205-551-8982
Cell: 205-529-5500
Fax: 888-672-1810
Mjones@NationalLand.com

Will Hairston
Office: 251-551-7945
Cell: 334-349-2001
Fax: 888-672-1810
Whairston@NationalLand.com

The above information is from sources deemed reliable, however the accuracy is not guaranteed.
National Land Realty assumes no liability for error, omissions or investment results.