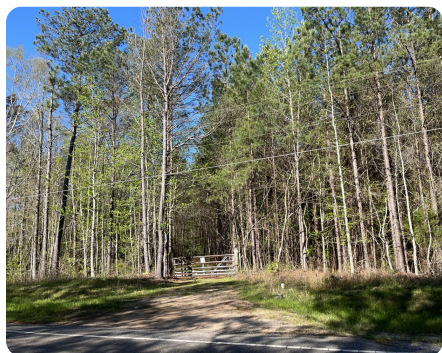


**SOLD**



## Kowaliga Hunting and Timber Investment 210

210 +/- Acres | Elmore County, AL



### ADDRESS

0 Kowaliga Rd  
Eclectic, AL 36024

### LOCATION

On Kowaliga Rd/Highway 63, just  
before Cottons BBQ.

### PROPERTY SUMMARY

PRIME LOCATION LOCATED ONLY 5 MILES FROM KOWALIGA BRIDGE! This tract is an elite recreational, hunting property and timber investment in a desirable location. It has easy access via paved road frontage on both Highway 63 and N. Ann St. Not only will it appeal to timber investors, but the high-end recreational market should put this tract at the top of their list. The "Clubhouse Tract" stands out with high-quality timber (perfect for a quail course), effortless topography, diverse sporting opportunities, and a superb location. For decades this property has been professionally managed for timber production. The timber consists of planted pines, bottomland hardwood, and natural pine. If you have a house on Lake Martin and are looking for a prime land investment, THIS IS IT! Additional acreage is available FOR LEASE. A combined total of 400+ for lease and purchase. Listing includes a .4 acre lot on Main St in Eclectic.

[nationalland.com/listing/kowaliga-hunting-and-timber-investment-210](https://nationalland.com/listing/kowaliga-hunting-and-timber-investment-210)



**National Land Realty**  
4267 Lomac Street  
Montgomery, AL 36106  
[NationalLand.com](https://NationalLand.com)

**Theodore DeVos**  
Office: 334-509-3140  
Cell: 334-850-4955  
Fax: 864-331-1610  
[Tdevos@nationalland.com](mailto:Tdevos@nationalland.com)

**Ellis Pilgreen**  
Office: 334-542-4935  
Cell: 334-799-6785  
Fax: 864-331-1610  
[Epilgreen@nationalland.com](mailto:Epilgreen@nationalland.com)

The above information is from sources deemed reliable, however the accuracy is not guaranteed.  
National Land Realty assumes no liability for error, omissions or investment results.