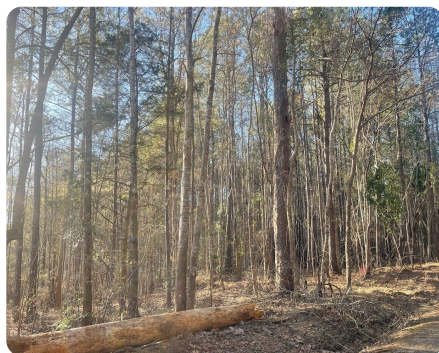


SOLD



## Small Hunting or Development Property

47.7 +/- Acres | Webster County, MS



### ADDRESS

0 Cummings Rd  
Walthall, MS 39771

### LOCATION

Cummings Rd, Walthall MS 39771

### PROPERTY SUMMARY

These 47.7 acres located between Eupora and Walthall are the perfect place for you to call home. Whether you're looking for a home site, recreational, or development property, this one may check all the boxes. Located just off Hwy. 9, Cummings Rd splits the property and is a great mix of hardwood and pine. It lays very well with gently rolling typography. Be sure and take a look at this one before you buy. Call for more information!

[nationalland.com/listing/small-hunting-or-development-property](https://nationalland.com/listing/small-hunting-or-development-property)



National Land Realty  
223 Trace Ridge Drive  
Kosciusko, MS 39090  
[NationalLand.com](https://NationalLand.com)



**Shane Bell**  
Office: 662-503-2501  
Cell: 662-633-1384  
[Sbell@nationalland.com](mailto:Sbell@nationalland.com)

The above information is from sources deemed reliable, however the accuracy is not guaranteed.  
National Land Realty assumes no liability for error, omissions or investment results.