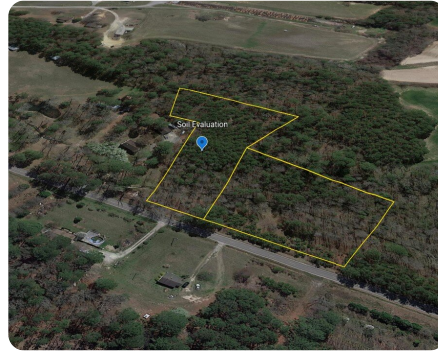


SOLD



Lot 6 - Fowler Road

4.2 +/- Acres | Wake County, NC



ADDRESS

8132 Fowler Road
Zebulon, NC 27597

LOCATION

1787.01-27-6592, 1787.01-26-9365

PROPERTY SUMMARY

Situated along Fowler Road, just between Zebulon and Rolesville, is this 4.2 +/- acre lot desiring to be built upon. The landowner recently combined two lots to increase the privacy and enhance the layout. Bring your own builder and plan your new construction overlooking a picturesque stream. Don't worry with easements, this property has over 300' of paved road frontage. A soils evaluation was recently conducted, and the site yielded a favorable septic area.

nationalland.com/listing/zebulon-creekside-homesite



National Land Realty
7001 Pelham Road
Suite M
Greenville, SC 29615
NationalLand.com

Cory Bowes
Office: 919-646-2455
Cell: 336-583-5370
Fax: 864-331-1610
Cbowes@nationalland.com

Terri Perry
Office: 919-584-9737
Cell: 919-625-8107
Fax: 864-331-1610
Tperry@nationalland.com

The above information is from sources deemed reliable, however the accuracy is not guaranteed.
National Land Realty assumes no liability for error, omissions or investment results.