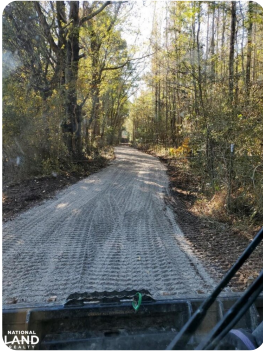


SOLD



Anderson Creek Tract 1

5 +/- Acres | Lauderdale County, AL



ADDRESS

0 CR-527
Anderson, AL 35610

LOCATION

From the Fish Creek turn left onto 207
continue for 1.8 miles then turn left
onto CR-527 continue for 0.2 miles

PROPERTY SUMMARY

Beautiful 5 Acre lot on Anderson Creek! This would make a great place to build your dream home or to camp out by the creek. It is located just 13 minutes from Rogersville, less than 30 minutes from Athens, and about 35 from Florence. The property has gorgeous views of the creek and the beautiful woods surrounding you. Call today before it's too late!

Real Estate Salesperson/Owner

Pictures are from multiple locations on the divided 35 acres

nationalland.com/listing/anderson-creek-tract-1



National Land Realty
2101 Clinton Avenue West
Suite 301B
Huntsville, AL 35805
NationalLand.com



Jonathan Berryhill
Office: 256-408-5130
Cell: 256-874-7354
Fax: 864-331-1610
Jberryhill@NationalLand.com

The above information is from sources deemed reliable, however the accuracy is not guaranteed.
National Land Realty assumes no liability for error, omissions or investment results.