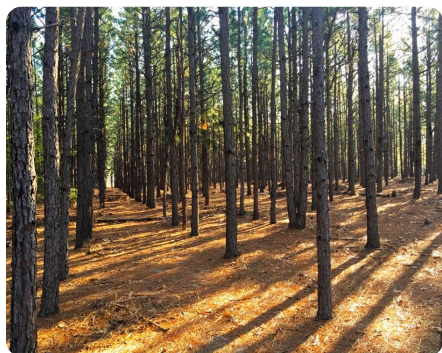


**SOLD**



## Darlington County Line Timber Investment

38.96 +/- Acres | Darlington County, SC



### ADDRESS

0 New Market Road  
Hartsville, SC 29550

### LOCATION

Depart Hartsville on S 5th Street toward E Carolina Ave. Turn left onto Lakeview Blvd. and continue for 4 miles before turning right onto New Market Road. Private Gated Drive will be on your left after approx. 1.1 miles.

### PROPERTY SUMMARY

Located minutes from Lake Robinson on the Darlington County and Chesterfield County line, this tract offers great potential for both current and future cash flow as a great investment. The tract includes a private drive (calculated in acreage) leading to the tract giving an isolated feel. A very solid Longleaf timber stand constitutes about 1/3 of the tract (providing income of \$2,000/year under current lease contract) with the remaining acreage having been replanted in early 2021 in Loblolly pine (owner had acreage sprayed/prepped and replanted). Deer are prevalent and would offer immediate recreational use while your future timber is maturing, as well as the occasional turkey. Call today to get a glimpse of this great potential investment opportunity!

[nationalland.com/listing/darlington-county-line-timber-investment](https://nationalland.com/listing/darlington-county-line-timber-investment)



**National Land Realty**  
1721 Saunders Street  
Columbia, SC 29201  
[NationalLand.com](https://NationalLand.com)



**Nicholas Ardis**  
Office: 864-331-1600  
Cell: 803-236-8411  
Fax: 864-331-1610  
[Nardis@nationalland.com](mailto:Nardis@nationalland.com)

The above information is from sources deemed reliable, however the accuracy is not guaranteed.  
National Land Realty assumes no liability for error, omissions or investment results.