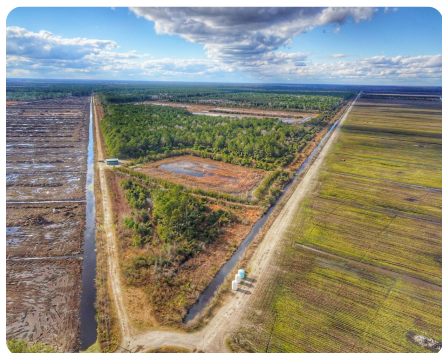


SOLD



Hyde County Duck Paradise

353.46 +/- Acres | Hyde County, NC



ADDRESS

Boundary West RD
Fairfield, NC 27826

LOCATION

Call listing agent Chase Blalock for directions.

PROPERTY SUMMARY

Hyde County, NC has been known for decades for being the place where sportsmen come from all over the country to enjoy world famous duck and bear hunting. Now is your opportunity to own a piece of Hyde County which offers tremendous hunting. The Hyde County Duck Paradise consists of 353.46 +/- acres with two duck impoundments, a 40-acre plantable duck impoundment, and a 4.5-acre impoundment. The impoundment is set up in 20-acre sections which allows you to flood at different times. The property has eight brand new duck blinds, a brand new electric pump, a slough gate, and four permanent bear stands. This property has it all - it even comes with a day house with a kitchen and locker room for gear and two shipping containers. If you are looking for a property to hunt ducks and bear this is it. The rest of the property is in mature timber that is in WRP which can be managed each year to help wildlife habitat for wild quail, turkey and deer hunting. Contact Chase Blalock today for a showing.

nationalland.com/listing/hyde-county-duck-paradise



National Land Realty
3265 S NC 127 Hwy
Hickory, NC 28602
NationalLand.com



Chase Blalock
Office: 980-400-3943
Cell: 919-280-5180
Fax: 864-331-1610
Cblalock@nationalland.com

The above information is from sources deemed reliable, however the accuracy is not guaranteed.
National Land Realty assumes no liability for error, omissions or investment results.