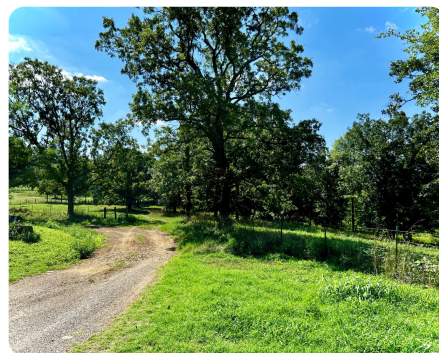
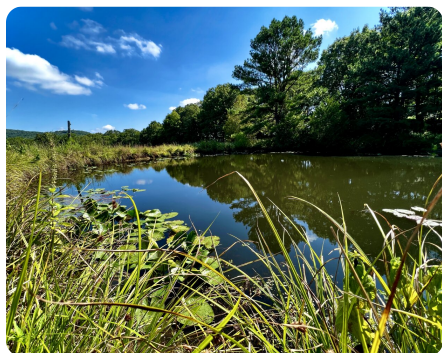


**SOLD**



## NWA Gateway to Boston Mountains

12.28 +/- Acres | Washington County, AR



### ADDRESS

00 16866 S Whitehouse RD  
Winslow, AR 72959

### LOCATION

From HWY 71 Southbound and less than 0.3 of a mile from Brentwood Cemetery, turn Left onto Whitehouse RD (Old 43) and continue East for 2.6 miles. You will see sign on the righthand side of the road.

### PROPERTY SUMMARY

This beautiful piece of natural paradise abuts the spectacular gateway into the Boston Mountains of Arkansas! This property is home to turkeys and deer, and the pond has catfish, minnows, and frogs! The mature timber offers build-site opportunities for a hunting cabin or your dream home! The 5+ acre established hayfield allows for food plots and a clear view of the large hills that surround you. Conveniently located less than 20 minutes from I-49 and less than 30 minutes from Fayetteville, AR, this unique property offers a lot of opportunities to get lost in the serene beauty that embodies what rural Arkansas living is all about.

[nationalland.com/listing/nwa-gateway-to-boston-mountains](https://nationalland.com/listing/nwa-gateway-to-boston-mountains)



National Land Realty  
1501 N. Pierce St.  
Suite 104  
Little Rock, AR 72207  
[NationalLand.com](https://NationalLand.com)



**Brayden Wiley**  
Office: 870-669-0639  
Cell: 479-361-0996  
Fax: 864-331-1610  
[Bwiley@nationalland.com](mailto:Bwiley@nationalland.com)

The above information is from sources deemed reliable, however the accuracy is not guaranteed.  
National Land Realty assumes no liability for error, omissions or investment results.