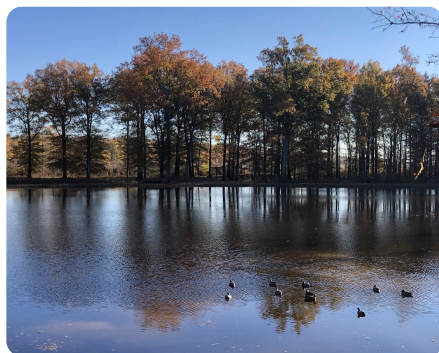
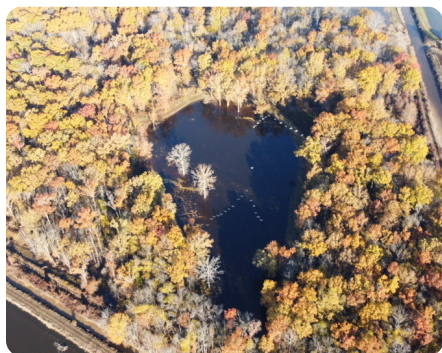


SOLD



Timber Duck Hole

42.44 +/- Acres | Lee County, AR



ADDRESS

0 Lee Rd 152
Aubrey, AR 72311

LOCATION

From Warrior Bottom, take county road 132 west to 152 south 2 miles and property is to the left.

PROPERTY SUMMARY

Presenting the Moon Duck Hunting Club. A 42.44 acre green tree tract surrounded by flooded fields and just south of the acclaimed Warrior Bottom. The timber includes white oak, swamp oak, red oak, and hickory varieties. The leveed impoundment is around 3 acres and water level is controlled by a pump and flashboard riser for easy planting in the summer and consistent water level all winter. The area around Big Creek is known for prolific duck hunting and quality deer. Enter the gate, park at the cabin, and walk to the blind or deer stand. This is a perfect property for easy land management to maximize the wildlife potential and enjoy the comfort of compact but action packed woods.

nationalland.com/listing/timber-duck-hole



National Land Realty
2298 Young Avenue
Memphis, TN 38104
NationalLand.com



Louis Holbrook
Office: 901-676-8556
Cell: 901-355-2988
Fax: 864-331-1610
Lholbrook@NationalLand.com

The above information is from sources deemed reliable, however the accuracy is not guaranteed.
National Land Realty assumes no liability for error, omissions or investment results.