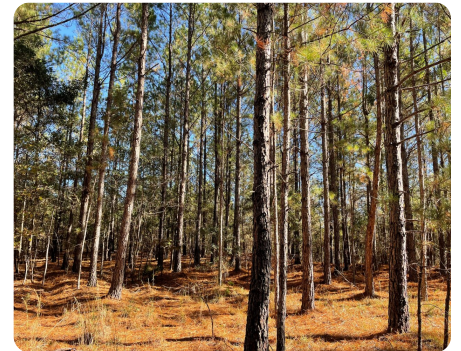




HH Bryant West

364.97 +/- Acres (\$3,650/acre) | Clarendon County, SC | \$1,332,141



ADDRESS

0 Syrup Mill RD
Manning, SC 29102

PROPERTY SUMMARY

The Bryant West is a 364.94 +/- Acre property located in Manning, SC. The property is south of Manning less than 2 miles from Lake Marion and the public Alex Harvin III boat ramp. The property offers great recreational opportunities and timber investment. Planted pine timber ranges from 10 yrs old to 19 yrs old and is just 15 minutes from Manning.

nationalland.com/listing/hh-bryant-west



National Land Realty
669 Marina Drive
Ste B-4
Charleston, SC 29492
NationalLand.com

Robert Waddell
Office: 843-473-7958
Cell: 843-749-0618
Fax: 864-331-1610
rwaddell@nationalland.com

Gregory Greer
Office: 843-580-2670
Cell: 843-754-3064
Fax: 864-331-1610
Ggreer@nationalland.com

The above information is from sources deemed reliable, however the accuracy is not guaranteed.
National Land Realty assumes no liability for error, omissions or investment results.