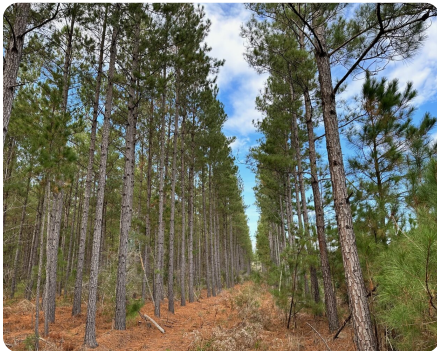




## Pleasant Hill Timber and Recreation Tract

180.71 +/- Acres | Georgetown County, SC | \$795,124



### ADDRESS

0 Pleasant Hill Drive  
Hemingway, SC 29554

### LOCATION

From Charleston take Highway 17 North across the Santee River and through Georgetown to Highway 701 North for 8 miles. Turn left on Choppee Road for 16 miles. Then turn left on Schoolhouse Drive. Property is on both sides of the road.

### PROPERTY SUMMARY

The Yawkey South tract is an excellent timber investment with almost 100% planted pines with mature merchantable loblolly pine on 62 +/- acres of the land and the balance in 6-year-old loblolly. Several thousand feet of paved road frontage and dual access make this a great tract. Less than 10 minutes to a public boat landing on the Great Pee Dee River. Close to Georgetown, Pawleys Island, and Conway.

[nationalland.com/listing/pleasant-hill-timber-and-recreation-tract](https://nationalland.com/listing/pleasant-hill-timber-and-recreation-tract)



National Land Realty  
669 Marina Drive  
Ste B-4  
Charleston, SC 29492  
[Nationalland.com](https://Nationalland.com)



Gregory Greer  
Office: 843-580-2670  
Cell: 843-754-3064  
Fax: 864-331-1610  
[Ggreer@nationalland.com](mailto:Ggreer@nationalland.com)

The above information is from sources deemed reliable, however the accuracy is not guaranteed.  
National Land Realty assumes no liability for error, omissions or investment results.