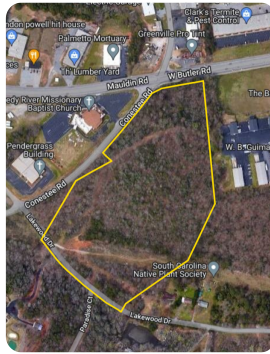


SOLD



## W Butler Road Development Site

17.3 +/- Acres | Greenville County, SC



### ADDRESS

W Butler Rd & Conestee Rd  
Greenville, SC 29607

### LOCATION

Located at the corner of W Butler Rd and Conestee Rd across the street from Reedy River Missionary Baptist Church

### PROPERTY SUMMARY

This 17.3 +/- acre development site is located at the corner of W Butler Road and Conestee Road in Greenville. It's within 1,000ft of Greenville and Mauldin city limits. It has water, sewer (Metro), and electricity available with a sewer and powerline easement on site along the boundaries. It has roughly 250ft of frontage on W Butler Rd, 400ft on Conestee Road and 600ft on Lakewood Drive. There are appx 25,500 cars per day on W Butler Rd at the site. The topography is slightly sloped but manageable. The property is currently zoned R-S. It's roughly 2.5 miles from I-85 and 3.5 miles from I-385. Less than 7 miles from the heart of downtown Greenville and 1.5 miles from center of downtown Mauldin. This is one of the last remaining sites of this size in this rapidly growing area.

[nationalland.com/listing/w-butler-road-development-site-1](https://nationalland.com/listing/w-butler-road-development-site-1)



National Land Realty  
7001 Pelham Road  
Suite M  
Greenville, SC 29615  
[NationalLand.com](https://NationalLand.com)



Edward Weathers  
Office: 855-384-5263  
Cell: 803-928-6188  
Fax: 864-331-1610  
[Eweathers@nationalland.com](mailto:Eweathers@nationalland.com)

The above information is from sources deemed reliable, however the accuracy is not guaranteed.  
National Land Realty assumes no liability for error, omissions or investment results.