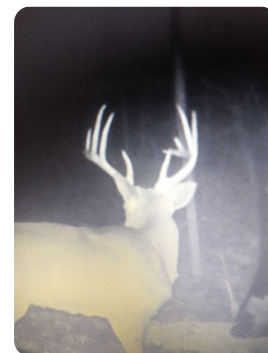
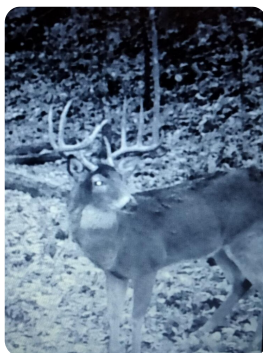


**SOLD**



## Farmland and Future Timber Investment Opportunity

60 +/- Acres | Lincoln County, KY



### ADDRESS

Brad Petrey Rd  
Waynesburg, KY 40489

### LOCATION

From Standford City Limits Head East on KY-78 / E Main St toward S 1st St for 2.7 miles. Turn right onto US-150 E / US Highway 150 E and travel for 7.5 miles. Turn right onto KY-643 / State Highway 643 for 3.7 miles. Turn left onto KY-1781 / KY Highway 1781 for 2.5 miles. Turn right onto Brad Petrey Rd for 1.6 miles. The last intersection before your destination is

### PROPERTY SUMMARY

This well-maintained piece of property has some amazing hunting and farming opportunities with a large pasture/hay field on top, surrounded by timber, with 2 ponds. The road leading to the field is easily drivable and would make a perfect homesite or cabin for peace and quiet. Located on a county road with very little traffic and surrounded by an abundance of beautiful, scenic views, this tract of land would be perfect to run livestock, extra hay, or to have a hunting ground. This property had a select cut of timber, no less than 16" diameter, 3-4 years ago, leaving a very balance of standing timber remaining for future investment.

[nationalland.com/listing/farmland-and-future-timber-investment-opportunity](https://nationalland.com/listing/farmland-and-future-timber-investment-opportunity)



**National Land Realty**  
424 Lewis Hargett Circle, 2nd Floor  
Lexington, KY 40503  
[Nationalland.com](https://Nationalland.com)



**Michael King**  
Office: 859-340-8044  
Cell: 859-779-9688  
Fax: 864-331-1610  
[Mking@nationalland.com](mailto:Mking@nationalland.com)

The above information is from sources deemed reliable, however the accuracy is not guaranteed.  
National Land Realty assumes no liability for error, omissions or investment results.