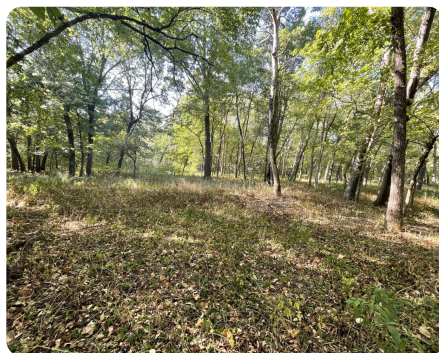
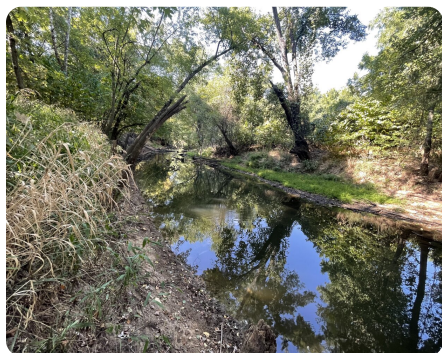


SOLD



Cherry Creek Hunting Tract

110 +/- Acres | Cherokee County, KS



ADDRESS

0000 Northwest 70th St
Hallowell, KS 66725

LOCATION

From Hallowell traveling east on 160 hwy, turn north on 70th. Travel 2 miles north to northwest corner of property.

PROPERTY SUMMARY

New to the market is this recreational investment opportunity with Kansas deer, turkey, and duck hunting! This timber tract can provide a new owner with many memories for years to come. After being in the same ownership for 30 years, this piece has the hunting cover desired by most along with potential to develop how you see fit. Cherry creek is known in Southeast Kansas as a travel corridor for great whitetails, not to mention the great roosting trees for wild turkeys. While sitting in the stand or blind you have a good chance of hearing wood ducks flying up and down this historic creek, and there may be potential to develop part of the property into a wetland with flooded timber and/or flooded crops. Lying only a few miles from the Neosho River, the location is great within the typical duck flyway. Current clearings could be planted to food plots and additional timber could be cleared. It's a great hunting property as-is, but allows ample opportunity to get creative as well.

nationalland.com/listing/cherry-creek-hunting-tract



National Land Realty
407 Webster Street
Pittsburg, KS 66762
Nationalland.com



Micah Ehling
Office: 620-445-9491
Cell: 620-249-4952
Fax: 855-657-2255
Mehling@nationalland.com

The above information is from sources deemed reliable, however the accuracy is not guaranteed.
National Land Realty assumes no liability for error, omissions or investment results.