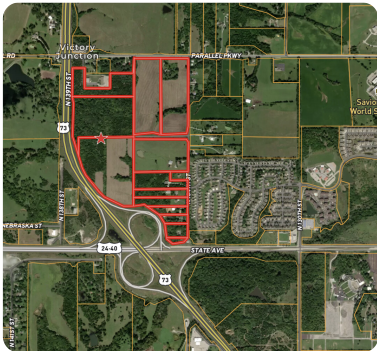




# Prime Tourism Resort Development Assemblage

203.85 +/- Acres | Wyandotte County, KS | \$62,192,791



## ADDRESS

13555 Parallel Parkway  
Kansas City, KS 66109

## LOCATION

Northbound on K7, Exit Eastbound on Parallel Parkway, turn right on 134th street.

## PROPERTY SUMMARY

National Land Realty on behalf of landowners is proud to bring to the market a unique opportunity to be part of a multi-million dollar development in the Kansas City metro. The site sits within the strong path of development and metro expansion. A qualified, vetted developer will have the chance to bring a needed high-rise hotel/villas with amenities or entertainment attractions to the metro. The path of development will revitalize an extensive corridor of the metro. Primed to be the new tourist destination, this assemblage comprises 13 parcels totaling approximately 203+/- acres. Kansas City has been put on the world map with the announcement of several developments in the metro and drawing more attention with every established Fortune 500 company that makes KC their home.

[nationalland.com/listing/k7-parallel-parkway-assemblage](https://nationalland.com/listing/k7-parallel-parkway-assemblage)



National Land Realty  
407 Webster Street  
Pittsburg, KS 66762  
[NationalLand.com](https://NationalLand.com)



**Angeliina Lawson**  
Office: 913-386-2438  
Cell: 913-972-1661  
Fax: 864-331-1610  
[Angeliina@nationalland.com](mailto:Angeliina@nationalland.com)

The above information is from sources deemed reliable, however the accuracy is not guaranteed.  
National Land Realty assumes no liability for error, omissions or investment results.