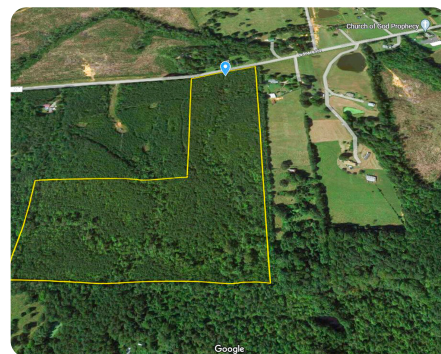


SOLD



Little Pocket Creek Homesite and Investment Property

43 +/- Acres | Lee County, NC



ADDRESS

South Plank Road
Sanford, NC 27330

LOCATION

Approx 15 minutes from downtown
Sanford, Approx 2 miles off US 1

PROPERTY SUMMARY

This 43-acre property is located in the rural area of western Lee County but is within easy driving distance of amenities in the fast-growing Sanford area. County water is available at the road and soil types indicate a perk site could be identified allowing for a buyer to build a dream home. The property is privately wooded and Little Pocket Creek runs across the rear acreage.

This property won't last long, call Paul Goins for more information!

nationalland.com/listing/little-pocket-creek-homesite-and-investment-property



National Land Realty
1822 S Wendover Road
Charlotte, NC 28211
NationalLand.com



Paul Goins
Office: 910-665-8361
Cell: 910-783-6105
Fax: 864-331-1610
Pgoins@nationalland.com

The above information is from sources deemed reliable, however the accuracy is not guaranteed.
National Land Realty assumes no liability for error, omissions or investment results.