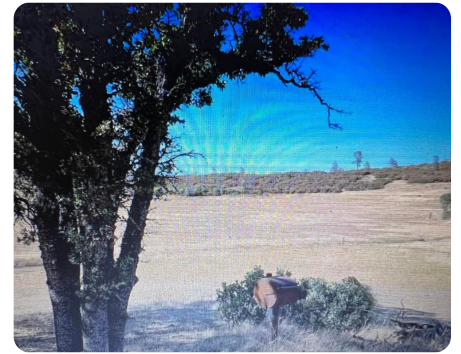


**SOLD**



## Hunting and Recreational Property

80 +/- Acres | Lake County, CA



### ADDRESS

25210 & 25262 JERUSALEM GRADE  
MIDDLETOWN, CA 95461

### LOCATION

Spruce Grove Rd. to Jerusalem Grade  
to property

### PROPERTY SUMMARY

Bordering BLM. Two contiguous 40-acre parcels (AP#013-017-54 & 57) must be seen to really appreciate the beauty. There is a large meadow, a pond, a camping site, 3 springs, seasonal John Thomas creek, and great views. The parcels border thousands of acres of BLM land and provide many opportunities for hunting, hiking, and horseback trips from the property through the BLM lands. These parcels are a bargain at this price!

[nationalland.com/listing/hunting-and-recreational-property](http://nationalland.com/listing/hunting-and-recreational-property)



National Land Realty  
6952 Wildflower Lane  
PO Box 67  
Shingletown, CA 96088  
[NationalLand.com](http://NationalLand.com)



Phillip Thomas  
Office: 530-460-4740  
Cell: 530-339-6738  
Fax: 864-331-1610  
[Pthomas@NationalLand.com](mailto:Pthomas@NationalLand.com)

The above information is from sources deemed reliable, however the accuracy is not guaranteed.  
National Land Realty assumes no liability for error, omissions or investment results.