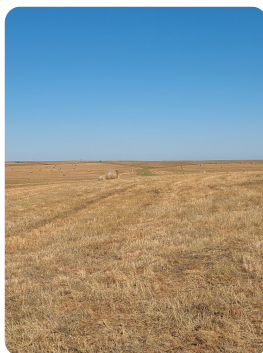
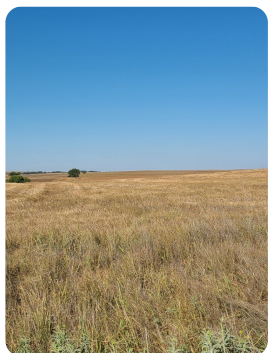


SOLD



Osborne Co. CRP

161 +/- Acres | Osborne County, KS



ADDRESS

1600 S. 150th Ave
Osborne, KS 67473

LOCATION

From Osborne: US281 south to
W. 150th Dr, west 3 mi., south
1/2 mi., west 1 mi., south 1/2
mi. to NE corner.

PROPERTY SUMMARY

CRP and waterways. This property was once productive cropland and can be again after 9/30/2025 when the CRP expires. FSA has 158.8ac with 142.78ac in CRP with an annual payment of \$7663. The balance is waterways and county road right of way.

*Harney silt loam and Harney-Nuckolls complex soils from 1% to 7% slope.

*Upland game hunting

nationalland.com/listing/osborne-co-crp



National Land Realty
2290 W 200 RD
Phillipsburg, KS 67661
NationalLand.com



Tom Hill
Office: 855-384-5263
Cell: 785-764-0782
Fax: 864-331-1610

The above information is from sources deemed reliable, however the accuracy is not guaranteed.
National Land Realty assumes no liability for error, omissions or investment results.