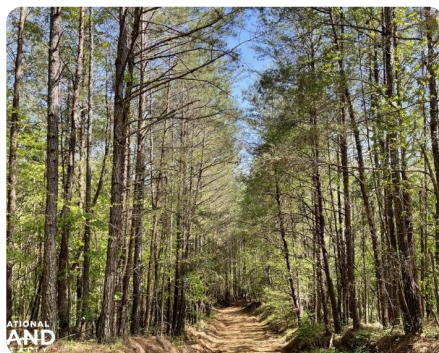


**SOLD**



## Mudd Creek South Hunting Recreation Tract

86 +/- Acres | Jefferson County, AL | CALL FOR PRICE



### ADDRESS

Weller Sumpter Road  
Adger, AL 35006

### LOCATION

459 to academy drive to North Johns  
Road to Weller Sumpter Road to Prop

### PROPERTY SUMMARY

#### AUCTION AUCTION AUCTION

Contact Mike Fisher 256-613-9482

This is an exceptional 86-acre hunting and recreational property just 15 minutes from the Hoover Met.

The gently rolling hills and ridges are covered with a mix of merchantable pine and hardwoods. To the North, it is bordered by a newly established and professionally managed 200ac Conservation Easement where they are planting tens of thousands of acorn-bearing hardwoods along a beautiful spring-fed creek. The South and East by Valley Creek Timber Company with Weller Sumpter Road dividing it providing access

Being situated between these an area of new growth and a Large Timber tract will make this tract a maior travel corridor for wildlife moving to feed. There are a

[nationalland.com/listing/mudd-creek-south-hunting-recreation-tract](http://nationalland.com/listing/mudd-creek-south-hunting-recreation-tract)



**National Land Realty**  
2633 Valleydale Rd.  
Suite 150  
Birmingham, AL 35244  
[NationalLand.com](http://NationalLand.com)

**Heath Fant**  
Office: 205-551-8272  
Cell: 205-240-3982  
Fax: 864-331-1610  
[Hfant@NationalLand.com](mailto:Hfant@NationalLand.com)

**Mitchell Jones**  
Office: 205-551-8982  
Cell: 205-529-5500  
Fax: 888-672-1810  
[Mjones@NationalLand.com](mailto:Mjones@NationalLand.com)

The above information is from sources deemed reliable, however the accuracy is not guaranteed.  
National Land Realty assumes no liability for error, omissions or investment results.