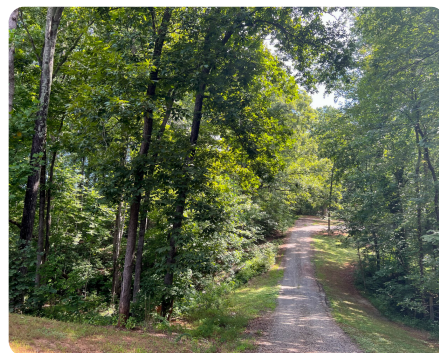


**SOLD**



## Lyman Private Homesite

0.75 +/- Acres | Spartanburg County, SC



### ADDRESS

0 Valley Rd  
Lyman, SC 29365

### LOCATION

From Lyman Town Court take Community St East to Ridge Rd - Left on Ridge Rd - Immediate right on Valley Rd - Property sits at the end of Valley Rd - on a private drive, North Side of the road.

### PROPERTY SUMMARY

Come build your dream home on this half-acre private homesite. Located at the end of Valley Road, this homesite offers a gently sloping, wooded topography in the heart of Lyman. Enjoy the nature trails just next door to the property. You'll be located minutes from Lyman Park, close to the great Spartanburg District 5 schools and nearby area restaurants and retail. You'll also be located just 20 minutes from Downtown Spartanburg and 30 minutes from Downtown Greenville. Come take a look at this property before it sells.

[nationalland.com/listing/lyman-private-homesite](https://nationalland.com/listing/lyman-private-homesite)



National Land Realty  
7001 Pelham Road  
Suite M  
Greenville, SC 29615  
[Nationalland.com](https://Nationalland.com)



**Paul Floyd**  
Office: 864-635-4475  
Cell: 864-661-5255  
Fax: 864-331-1601  
[pfloyd@nationalland.com](mailto:pfloyd@nationalland.com)

The above information is from sources deemed reliable, however the accuracy is not guaranteed.  
National Land Realty assumes no liability for error, omissions or investment results.