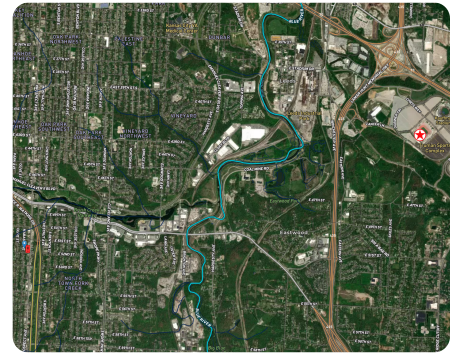




## Medium High Density Residential Lot

0.93 +/- Acres (\$159,140/acre) | Jackson County, MO | \$148,000



### ADDRESS

5130 Prospect Avenue, Kansas City,  
Missouri 64130  
Kansas City, MO 66048

### LOCATION

Located 1-block west of U.S. 71  
highway on the northwest corner of  
Prospect Ave and 52nd St.

### PROPERTY SUMMARY

Within blocks of the \$250 million SouthPointe development  
underway at 63rd St, a mixed-income multifamily, office and  
hospitality project.

Direct access to US 71 Highway and the MAX bus rapid transit line.

Eligible for incentives, Urban Renewal Area (URA) tax abatement,  
and Missouri WORKS income tax benefits.

[nationalland.com/listing/retail-opportunity-near-world-cup-2026-arena](https://nationalland.com/listing/retail-opportunity-near-world-cup-2026-arena)



National Land Realty  
407 Webster Street  
Pittsburg, KS 66762  
[NationalLand.com](https://NationalLand.com)



**Angeliina Lawson**  
Office: 913-386-2438  
Cell: 913-972-1661  
Fax: 864-331-1610  
[Angeliina@nationalland.com](mailto:Angeliina@nationalland.com)

The above information is from sources deemed reliable, however the accuracy is not guaranteed.  
National Land Realty assumes no liability for error, omissions or investment results.