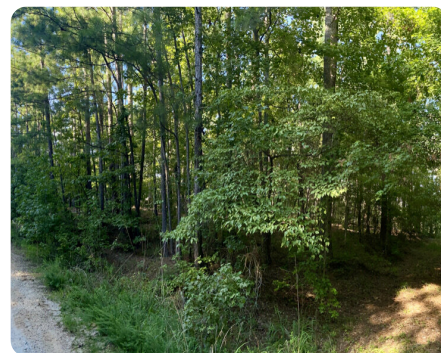


SOLD



Lake Sinclair Big Water East

0.89 +/- Acres | Hancock County, GA



ADDRESS

0 Big Water East Rd.
Sparta, GA 31087

LOCATION

*Call For Directions: Austin Hill 229-444-3275 *

PROPERTY SUMMARY

This gorgeous, wooded lot boasts scenic views, lake frontage, a deep water cove, and great proximity to all of Lake Sinclair's favorite hangouts! Located on the Sparta side of the lake, this property is 20 miles from Milledgeville, by car. Upon arrival, you will notice a mixture of mature pines and hardwoods shading a long narrow lot that gently slopes down to the water. At the water's edge, you will find approximately 110 feet of frontage that offers wide open views of a large cove with 9-10 ft water depth just off of the shoreline. The deep water cove is postured just off of the main river, directly across the lake from US Hwy 441 and Little River Park. By boat, you will enjoy a short 5-6 minute cruise to Sinclair Marina. Furthermore the famed 'Goat Island' is just an 8-9 minute cruise by boat, and Crooked Creek Marina & Restaurant is roughly 20 minutes to the North. Lake life done YOUR way awaits you.

nationalland.com/listing/lake-sinclair-big-water-east



National Land Realty
1070 Salem Walk Drive
Suite 4
Greensboro, GA 30642
Nationalland.com



Austin Hill
Office: 229-210-8437
Cell: 229-444-3275
Ahill@nationalland.com

The above information is from sources deemed reliable, however the accuracy is not guaranteed.
National Land Realty assumes no liability for error, omissions or investment results.