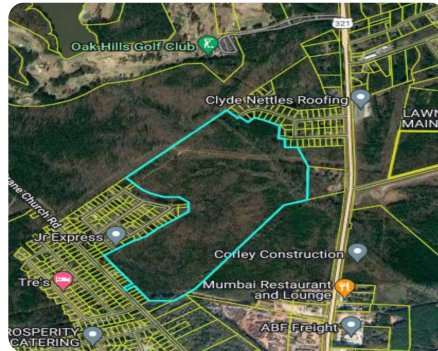
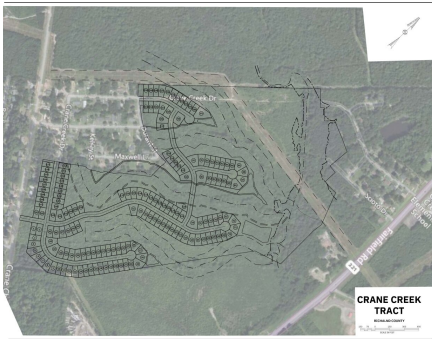


SOLD



107 Acres – Residential Development Tract

107 +/- Acres | Richland County, SC



ADDRESS

W/S Fairfield Road
Columbia, SC 29203

LOCATION

Property is located on Crane Church Road off Hwy 321, just north of Interstate 20.

PROPERTY SUMMARY

Offered for sale is 107+/- acres of residential development land on Crane Church Road in Richland County, SC, just to the south of and adjacent to Oak Hills Golf Club. The parcels are zoned RS-HD in Richland County, which allows for high density residential development of lots at a minimum size of 5,000/SF (8 per acre). The property boasts 560'+/- of road frontage and full access to water and sewer via the City of Columbia municipal system. A preliminary wetlands study and Phase I have been completed. Contact the listing agent for details!

Hunter Suggs, Cell # (803) 603-3738

nationalland.com/listing/107-acres-residential-development-tract



National Land Realty
1721 Saunders Street
Columbia, SC 29201
NationalLand.com



Hunter Suggs
Office: 803-353-5752
Cell: 803-603-3738
Fax: 864-331-1610
HSuggs@NationalLand.com

The above information is from sources deemed reliable, however the accuracy is not guaranteed.
National Land Realty assumes no liability for error, omissions or investment results.