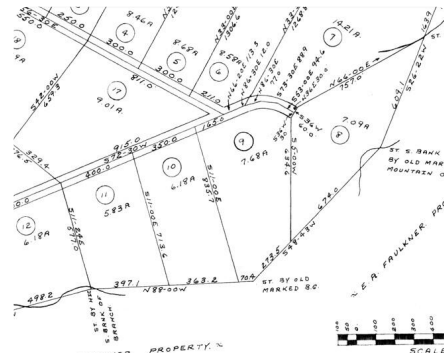
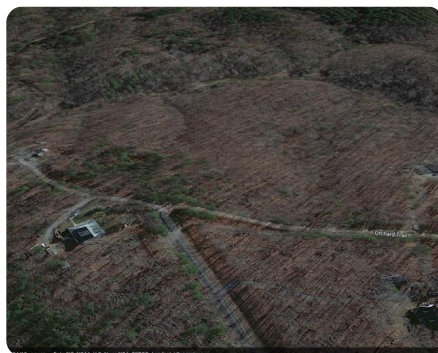
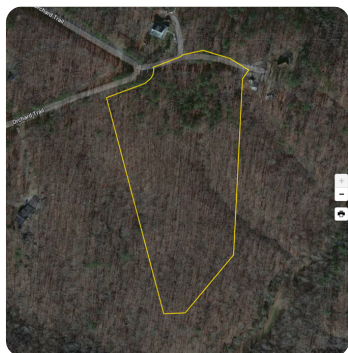


SOLD



Marshville Homesite with Pond

7.68 +/- Acres | Union County, NC



ADDRESS

0 Orchard Trail
Marshville, NC 28103

LOCATION

From Marshville head south on N Cross St then turn right onto E Main Street and then left onto N White Street and continue onto Landsford Road. In 6.7 miles turn left onto Orchard Trail, property will be on your left in .9 miles

PROPERTY SUMMARY

This 7.68-acre residential building lot with a pond is ready for the construction of your dream home. It is located in the southeast area of Union County which is experiencing increased demand for residential building lots. This tract offers a mix of buildable acreage (subject to a perk test), scenic beauty, and wildlife habitat.

The site is private, yet is only minutes to shopping, dining, and recreation in Marshville and Monroe. The newly completed Monroe bypass means there is reasonable access to south Charlotte and I-485. Call today to learn more!

nationalland.com/listing/sleepy-hollow-homesite-with-pond



National Land Realty
1822 S Wendover Road
Charlotte, NC 28211
NationalLand.com

Peter Mazeine
Office: 704-228-4925
Cell: 704-906-1202
Fax: 864-331-1610
Pmazeine@nationalland.com

Edward Mayer
Office: 704-610-6732
Cell: 704-998-1989
Fax: 864-331-1610
emayer@nationallandrealty.com

The above information is from sources deemed reliable, however the accuracy is not guaranteed.
National Land Realty assumes no liability for error, omissions or investment results.