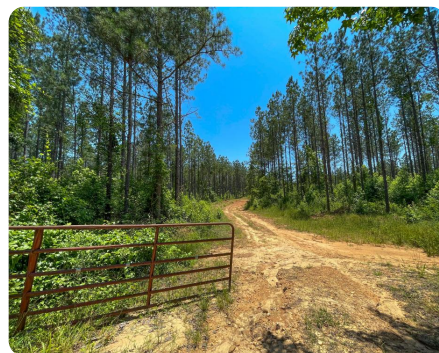
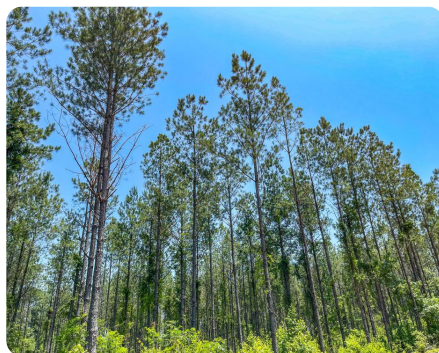
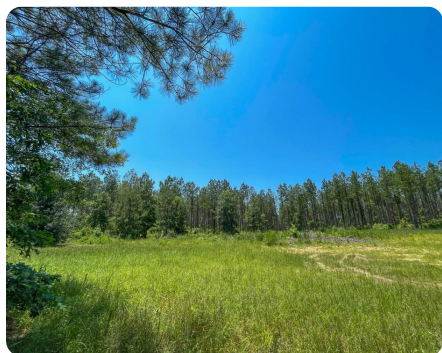


**SOLD**



## Six Mile Creek Hunting and Timber Tract

210 +/- Acres | Bibb County, AL



### ADDRESS

Brierfield, AL 35035

### LOCATION

### PROPERTY SUMMARY

This hunting/timber tract is located on the beautiful Six Mile Creek. Planted pines, mature hardwoods, duck slough, food plots, and camp site. 4 miles off a paved road. It's an awesome timber investment. Beautiful six mile creek. For more information, call Will Hairston 334-349-2001 or Steven Bowman at Southern Investment Properties - 205-217-8389

[nationalland.com/listing/six-mile-creek-hunting-and-timber-tract](https://nationalland.com/listing/six-mile-creek-hunting-and-timber-tract)



National Land Realty  
9 N. Conception St.  
Mobile, AL 36602  
[NationalLand.com](https://NationalLand.com)



**Will Hairston**  
Office: 251-551-7945  
Cell: 334-349-2001  
Fax: 888-672-1810  
[Whairston@NationalLand.com](mailto:Whairston@NationalLand.com)

The above information is from sources deemed reliable, however the accuracy is not guaranteed.  
National Land Realty assumes no liability for error, omissions or investment results.