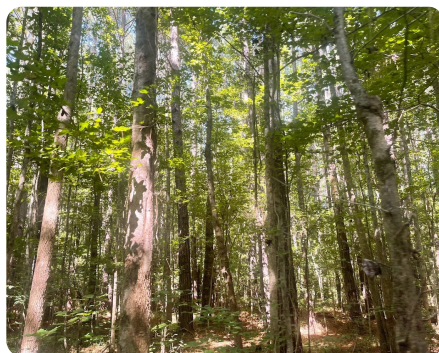


SOLD



Great Recreational Get-Away and House Place

110 +/- Acres | Attala County, MS



ADDRESS

0 CR 5233
Mccool, MS 39108

LOCATION

Turn right in the city of McCool onto Hwy 411. Go 4 miles. Turn left onto CR 5240. Go 1 mile. Take a left and the property is on the left just past the church.

PROPERTY SUMMARY

This 131.5 acres has an old farm house, pond, and well on the property. The timber makeup is mixed hardwood and pine. The pines are about 30 years old with some older hardwood and mixed aged timber. The tract also has pastureland. With rolling topography and an old homestead, this would be a great home place or recreational get-away. It has great deer and turkey hunting too!

nationalland.com/listing/great-recreational-getaway-and-house-place



National Land Realty
223 Trace Ridge Drive
Kosciusko, MS 39090
NationalLand.com



Shane Bell
Office: 662-503-2501
Cell: 662-633-1384
Sbell@nationalland.com

The above information is from sources deemed reliable, however the accuracy is not guaranteed.
National Land Realty assumes no liability for error, omissions or investment results.