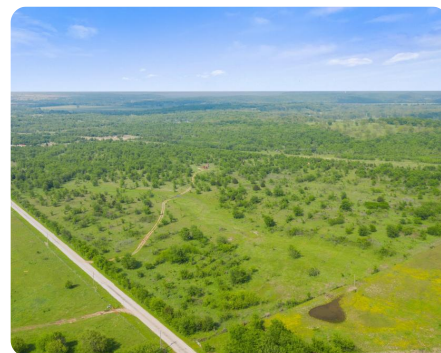
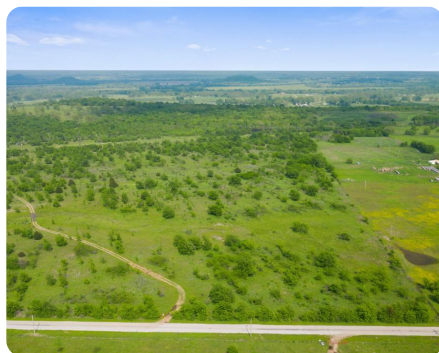
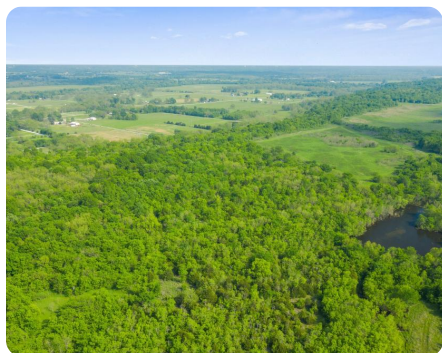


**SOLD**



## Oologah Homesite 50

50.11 +/- Acres | Rogers County, OK



### ADDRESS

0 S 4100 Road  
Claremore, OK 74017

### LOCATION

From intersection of Hwy 169 and E 400 Rd in Oologah, head south on Hwy 169 for 1.5 miles, turn south onto S 4090 Rd, in 1.8 miles keep left onto 4090 Rd, in 1 mile turn south onto S 4100 Rd, go 0.7 miles and property is on east side of road.

### PROPERTY SUMMARY

Peaceful acreage just south of Oologah Lake to start your homestead in the country without being too far from town. The paved roads can get you to downtown Tulsa and the airport in 30 minutes, Owasso in 20 minutes, and only 5 minutes to Highway 169. Rural water and electricity are available at the road and no restrictions let you do as you please. There is enough room for your hobby farm and enough cover for hunting opportunities, all while being approximately 7 miles from the Oologah Lake dam and boat ramp. A three-quarter acre pond borders a block of timber providing a great water source for wildlife and the ability to fish out of your back door. Additional land available.

[nationalland.com/listing/oologah-homesite-50](https://nationalland.com/listing/oologah-homesite-50)



**National Land Realty**  
5815 W US Hwy 270  
McAlester, OK 74501  
[NationalLand.com](https://NationalLand.com)



**Keaton Page**  
Office: 580-954-3433  
Cell: 620-778-5181  
Fax: 864-331-1610  
[Kpage@NationalLand.com](mailto:Kpage@NationalLand.com)

The above information is from sources deemed reliable, however the accuracy is not guaranteed.  
National Land Realty assumes no liability for error, omissions or investment results.