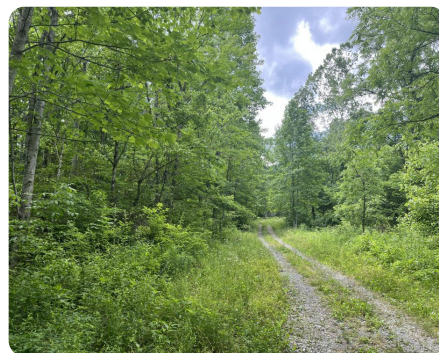


SOLD



Webb Mountain Forestland

74.08 +/- Acres | Sevier County, TN



ADDRESS

0 Hurst Hollow Road
Sevierville, TN 37876

LOCATION

PROPERTY SUMMARY

This is a once in a lifetime chance to own a piece property that borders the Great Smoky Mountains National Park. This property offers breathtaking views and an assortment of wildlife. There are options for buildable homesites. Minutes away from all the excitement of Sevier County, but is still a very secluded private property. The southern boundary on Webb Mountain joins the National Park while all other sides are privately owned forestland. A perennial creek runs through the center. Call Will Tate for more information 855-384-LAND.

nationalland.com/listing/webb-mountain-forestland



National Land Realty
3520 Brandon Lee Dr.
Maryville, TN 37804
NationalLand.com



William Tate
Office: 865-276-8581
Cell: 865-806-2138
Fax: 864-331-1610
Wtate@nationalland.com

The above information is from sources deemed reliable, however the accuracy is not guaranteed.
National Land Realty assumes no liability for error, omissions or investment results.